

## Electronic Dispenser Installation Instructions

\*Please note that the user is responsible for the proper installation and use of this dispenser

What you need for installation:

1. Included hardware kit, or hardware suitable for mounting surface
2. Level
3. Pencil
4. Drill with appropriate drill bit for wall surface and hardware
5. Phillips screwdriver
6. Approved eye protection

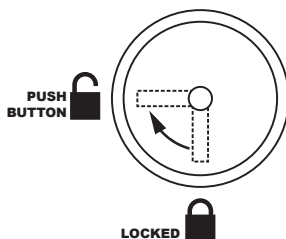
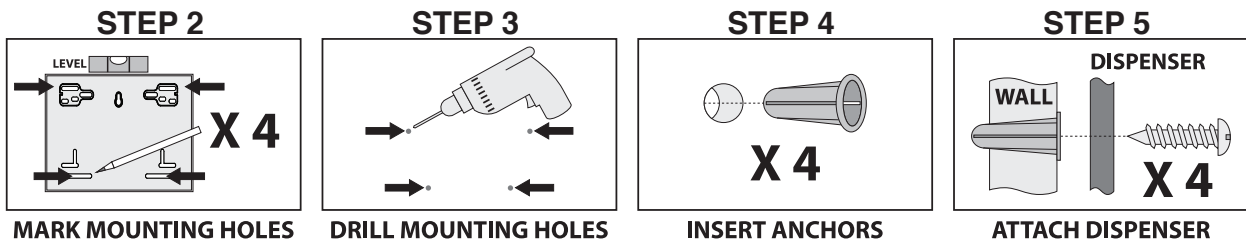
Step 1: Locate the desired position on the wall/surface. Use the template printed on the box or use the key to open the dispenser and hold the dispenser in the desired location.

Step 2: Use the level to level the template or dispenser and mark 4 mounting holes on the wall.

Step 3: Using the drill with appropriate drill bit, drill the holes into the wall or surface.

Step 4: Install fastener anchors if needed.

Step 5: Keeping the dispenser in the open position, use the supplied or necessary hardware to mount the dispenser securely into place. The level will ensure the dispenser is balanced. Be sure to use the appropriate anchors and hardware for the surface.



### Dual Purpose Locking Mechanism

The lock has 2 modes of operation -

1. To use the dispenser in LOCKED position, the lock should be in the 6 o'clock position.
2. To use the lock as Keyless / Push-button open, the lock should be in the 9 o'clock.
3. If lock moves out of the 9 o'clock position, use the key to re-set the lock exactly to the 9 o'clock position.